







Unfortunately, they were closing up shops by the time we got there. That was, OK, though. As I said. It had already been a full day.

Prior to leaving for Japan, I reached out to a frequent contributor to [E-bodies.org's Facebook page](#), Ishii Mitsubishi. He is also the unofficial social media coordinator for a group of five E-body drivers in Japan's capitol city, Tokyo/e. We agreed to meet at [Jumbo Cook](#) who stands watch over the entrance to Kappabashi-dori.

It's hard to describe the feeling when a 75-inch wide 1970 'cuda pulls down the street in Tokyo, all 440 cubic inches rumbling by with a wave and a smile. The feeling is especially odd in a city where Kei cars are common and are regulated to just over 53-inches wide and 40.3 cubic inches of displacement. That means the Kei car would barely eclipse those menacing 1970 'cuda parking lights tucked up in the grille.

Mitsu Ishii, aka Ishii Mitsubishi, jumped out of the car with a agility. Since he had to park driver's side facing the curb, the the street made for a small obstacle course. His Vitamin C 6 pack, 727 Torqueflite, Rallye optioned 'cuda lurked across from the local Koban (small police station).



great deal of railing along Orange, 440-menacingly

Mitsu told me all about how he fell in love with 'cudas while studying in Ottawa, KS from 1992-1996. A Challenger owning friend talked him out of a Mustang and into a 1970 FE5 Barracuda Grand Coupe. He drove that car everywhere, and I mean everywhere. He told me of a trip he took from KS to TX, out west to CA, and up the Coast. He came back through upper plains – in a snowstorm, no less. He has the photos to prove it! Unfortunately, he had to sell the Grand Coupe before returning to Japan.

It did not take Mitsu long to miss his beloved Mopar. By 1997 he purchased his current 1970 'cuda. He bought the car from someone who had it shipped from AZ. Since purchasing the car he has installed an MSD ignition, LED lights all around, 6 and 4 pot disc brakes, and roller rockers. He was working on the car late into the night before I arrived and decided to deal with the SHAKER breather once he had more sleep. But other than that, the car was straight. He has driven his fish in auto cross competitions for the last 10 years, and has upgraded the suspension with Bilstein shocks, added just enough negative camber, and the required seat/harness. All told, this Shinto priest really seems to have things figured out.<sup>1</sup>



<sup>1</sup> [A very broad overview of Shintoism is available from Japan-guide.](#)

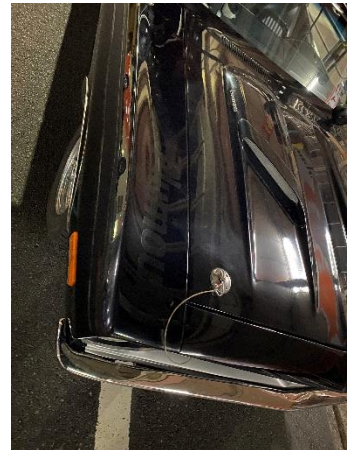
A short while later, a black 1972 'cuda rumbled up with something I had never seen before, a roof rack sporting a snow board and a set of skis. Mitsu quickly introduced my new snow-loving friend, Atsushi Hidaka. Of course, I had to ask him about the roof rack. He said that he loves snow sports and he loves his 'cuda. It only makes sense to do everything that he loves! Why should he have to choose one or the other? It's pretty hard to argue with that logic.



Atsushi's experience obtaining his car was much different than Mitsu's. By 1972, there were dealers in Japan that sold Plymouth cars, so importation rules apply. Seven years ago, when Atsushi tried to bring his eBay find to Japan, he had to put his fish through the regulatory wringer. He was required to modify the rear seat belts, change the headlights, modify the reverse lights, put a horn sticker on the steering wheel, and have a flare in the back for roadside assistance. He also had to remove the rear side markers and front side-marker turn indicators. He had to move the front turn signals closer together and add a passenger-side mirror (a Chevy one was what he could find). Eventually, Atsushi got approval to drive the car on Japanese streets. Unfortunately, that led to more than ten tows in the first year from his supposed "Perfect Condition" eBay find. He additionally had to figure out why he was only getting 800 meters per liter of gas (about 2 miles/gallon). Keep in mind that they pay about the same for a liter of gas as we do for a gallon in Indiana. Once he found and fixed the fuel leak, Atsushi said that the car now runs six kilometers per liter (over 12 miles/gallon).

Atsushi is a fairly young guy, so I asked him how he came to want a 'cuda. He responded with a chuckle, "Fast and Furious." We all laughed. Atsushi also explained that his first car was left-hand drive and that he also owns a late-60's Nova. This airplane mechanic for ANA does not shy away from American muscle cars. His 'cuda runs a mildly prepped replacement 340-4 bbl connected to the original auto trans.

The black paint is a refresh. Atsushi opted to add the Twin Slash Dodge stripes above the drivers' side wheel, the Plymouth decal from a Superbird above the passenger's side wheel, and a 340 decal like the one you might find on a Demon atop the hood. All match the black, on black, on black theme. Modifications for Atsushi's '72 include a heads-up tach, and 5 speaker stereo. MSD ignition and Koni shocks help the Cragar mags, wrapped in snow tires, get him to the slopes.



Just when we were beginning to wonder if something the third Tokyo/e member who was supposed to join us, a 1973 Rallye Challenger rolled into view. I was introduced Toyoshima who explained that his 340-4bbl was giving him reading before he left and he asked Al (who he not-so-referred to as, “My Teacher”) to help him diagnose.



happened to Super Blue to Hiro a low voltage jokingly

Hiro bought his Challenger six years ago over the web. He explained that he had a car importer check it out before coughing up the cash. The car has an auto trans and a Rallye dash. Modifications to this bright blue machine include swapping for a '72 front bumper, Welgo Racing Rims, and rear air shocks for 2 inches of lift. He shared that he is headed for a new wire harness and maybe a slightly more aggressive (3.23:1 → 3.55:1) rear end. At least, that is what Al tells him!

Troubleshooting his voltage issue brought us to talking about parts. I asked how easy it was to get parts for these classic Mopars in Japan. They all had tales of difficulty locating parts. They said that most parts purchases are off eBay, Jegs, or Mancini Racing. Classic industries and Year One should send these guys a few catalogs!



Not trusting that the Challenger would cooperate with a re-start, Hiro had to head back to the garage. Mitsu, Atsushi and I went to late supper at a local gyoza restaurant. Conversation ranged from cars to religion and politics. Everyone had a great time. As we walked back to the cars we discussed how classic Mopars are received in Japan. They explained that the E-bodies are not fully welcome at non-US specialty car shows. But, they do go to an annual [Mooneyes Streetcar Nationals](#) and their [Custom Show](#) (Yes there is an awesome Mooneyes custom car shop in Yokohama). Once a month they classic car show with about 40 American cars from the And of course the group must, as Mitsu put it, “blow the with the occasional run to the infamous [Diakoku Parking](#)



[Hot Rod and](#) store and attend a 70's to 90's carbon out,” [Area.](#)

As is custom when people meet in Japan, we each exchanged gifts. I passed Anniversary patches to our new Tokyo/e friends. Cool americana is very and the patch fits the bill. Check out new "Supercharger" embroidered came across. I look forward to touch with our new friends and next time I return to Japan. As our own said, maybe we need to extend the

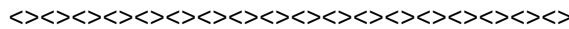


along IMC 25<sup>th</sup> cool in Japan the brand n jacket that I keeping in meeting up Steve Wisdom Club to Japan!

This experience is one that I will never forget. And the night was capped off with a ride back to my hostel in Mitsu's 'cуда down the late-night streets of Tokyo. It's hard to beat that experience!



**Tokyo/e**



**TATTLER'S CORNER (In Memory of Jan Peel and her awesome sense of humor!)**



*For those that didn't stop in at our booth at the Swap meet, you missed a heck of a donut feast!*

**April 2026 Birthdays:**



**Ron Kriech 04-08   Ginger Zimmerman 04-14   Rick Zimmerman 04-19   Lori Karch 04-19  
Evan Springer 04-23**

**April 2026 Anniversaries:**

**Linda & Tim Little 04-16   Sharon & Kevin Weden 04-25   Sharri & Jeff Andis 04-29**

## **HOOSIER REGION PLYMOUTH CLUB NEWS**

- Plymouth Club member Sue Eilert fell and broke her leg and is currently going through physical therapy. Teresa & I visited her at the facility & she is doing well & in great spirits.
- Please note the IMS Museum trip in info above. It would be great if any of Plymouth group could attend!.
- Still no announcement on the date or location of the Plymouth Owners Club 2026 National Meet but I'll keep watching.

### **2026 INDY MOPAR CLUB – EVENT LIST**    **TBV – to be verified**    **TBD – to be determined**    02-20-26 tvk

						IMC Contact
Jan	29	Thurs	7-8p	Indy Mopar Club Monthly Mtg	MCL Cafeteria	Vickie Walker
Feb	26	Thurs	7-8p	Indy Mopar Club Monthly Mtg	MCL Cafeteria	Vickie Walker
Mar	6-7	Fri-Sat		Indy Cyl Hd Chrysler Performance Trade Show	Ind State Fairgrounds Ronda Cherry	Vickie Walker
	26	Thurs	7-8p	Indy Mopar Club Monthly Mtg	MCL Cafeteria	Vickie Walker
	27-29	Fri-Sun		O'Reilly World of Wheels Car Show	Ind State Fairgrounds	Larry Mayes
Apr	30	Thurs	7-8p	Indy Mopar Club Monthly Mtg	MCL Cafeteria	Vickie Walker
May	8-16	Fri-Sat wk later		Mecum Collector Car Auction	IN State Fairgrounds	Ronda Cherry
	27-31	Wed-Sun		Walter P Chrysler WPC Natl Meet with/ Mopars at the Pk-Farmington MN		Tom Kelly
	28	Thurs	7-8p	Indy Mopar Club Monthly Mtg	MCL Cafeteria	Vickie Walker
Jun	11--13	Thur-Sat		Natl Assoc of Lil Red Express Owners	Louisville, KY	Tom Kelly
	17-21	Wed-Sun		The National DeSoto Club 39 <sup>th</sup> Natl Meet	Louisville, KY	Tom Kelly
	21-25	Sun-Thur		Airflow Club of Amer National Meet	Helena MT	Tom Kelly
	25	Thurs	6-8p	Indy Mopar Club Monthly Mtg	MCL Cafeteria	Vickie Walker
Jul	<b>11</b>	Sat	10a-2p	Fletcher Chrysler - IMC Cruise-In	Franklin, IN	Steve Wisdom
	<b>TBD</b>			Plymouth Owners Club National Meet		Tom Kelly
	10-12	Fri-Sun		Chryslers at Carlisle	Carlisle PA	Tom Kelly
	30	Thurs	7-8p	Indy Mopar Club Monthly Mtg	MCL Cafeteria	Vickie Walker
July	31-Aug 2	Fri-Sun	8a	MOPAR NATIONALS-Natl Trails Raceway	Columbus (Hebron) OH	Tom Kelly
Aug	1-2	(continued)		MOPAR NATIONALS-Natl Trails Raceway	Columbus (Hebron) OH	Tom Kelly
	15	Sat		Woodward Dream Cruise (wk long lead up)	Oakland County MI	Jeff Platzer
	27	Thurs	7-8p	Indy Mopar Club Monthly Mtg	MCL Cafeteria	Vickie Walker
Sept	18-19	Fri-Sat		MoParty-Beech Bend Raceway	Bowling Green KY	Tom Kelly
	18-19	Fri-Sat		Natl Hemi Owners Assoc Reunion @ Moparty-Bowling Green KY		Tom Kelly
	25-26	Fri-Sat		Pure Stock Muscle Car Drag Race	Stanton MI	Tom Kelly
	24	Thurs	7-8p	Indy Mopar Club Monthly Mtg	MCL Cafeteria	Vickie Walker
Oct	<b>10 (rain date Oct 17)</b>		10a-2p	York Chrysler / IMC Cruise-In	Plainfield IN	Vickie Walker
	<b>TBD</b>			Breakthru T1D (JDRF) RUN/WALK	Indianapolis IN	Steve Wisdom
	29	Thurs	7-8p	Indy Mopar Club Monthly Mtg	MCL Cafeteria	Vickie Walker
				Nominations for 2027 Officers		
Nov	19	Thurs	7-8p	Indy Mopar Club Monthly Mtg	MCL Cafeteria	Vickie Walker
	21-22	Sat-Sun		Muscle Car and Corvette Nationals show	Rosemont IL	Tom Kelly
Dec	<b>6</b>	Sun	5p	Indy Mopar Club Christmas Party	Steve Wisdom's Clubhouse	Steve Wisdom
				NOTE: NO DECEMBER MEETING AT MCL	1202 Leisure Lane, Greenwood 46142	

**Local Cruise-Ins (Reoccurring)**

<b>April thru Oct</b>	<b>Every Mon</b>	<b>Avon Steak &amp; Shake, Rockville Rd</b>	<b>Avon IN (US 136)</b>	<b>Jeff Platzer</b>	
May thru Sept	1 <sup>st</sup> Fri	5-9pm	Danville Cruise-In 1st Friday of Month	Danville IN Town Square	Tom Kelly
May thru Sept	Sat	6-9pm	Lowes Summer Cruise-in - Every Sat Night	Avon IN US 36	Jeff Platzer
May thru Sept		<b>TBV</b>	Mooresville Cruise-in / <b>TBV</b>	Mooresville IN	Dick Crawmer
Apr thru Oct	Sat	4pm	The SUDS Cruise-in	Greenwood IN	Evan Springer
May thru Sept	Thur	5-9pm	Martinsville Thursday Cruise on the Square	Martinsville IN	Dick Crawmer